

Shapes, stamped pieces

Our shapes and stamped pieces are used in a variety of applications in following industries:

automotive, healthcare, industrial appliance, household appliance



Product Features

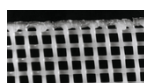
Shapes, stamped pieces

Stamped pieces are convenient for insert molding and are made from Sefar fabrics by a cold, laser or ultrasonic stamping process.

Using state-of-the-art laser and ultrasonic punching equipment, SEFAR MEDIFAB® and SEFAR MEDITEX® solutions can be tailored to virtually any shape or dimension. Laser cut parts can be produced in multiple layers. The high-precision laser cut parts are characterized by high edge quality. Laser cutting allows for elaborate shapes to be cut that are specific to the customer's design needs. Small parts can be produced on dispenser tape. This guarantees a high quality during transport and storage and often also simplifies further processing (e.g. pick and place)

DOWNLOADS

Product forms



Referenzen



- Cold stamping is the most economical process and provides standard-tolerance pieces with edges that are not sealed. Cold stamping is possible for all fabrics. Piece dimensions range up to 1000 x 1000 mm
- Laser stamping provides a heat-sealed edge. Maximum dimensions are 480 x 480 mm

Sefar AG

Hinterbissastrasse 12
9410 Heiden
Switzerland

Phone +41 71 898 5700
Fax +41 71 898 5721

info@sefar.com

[Go to product page](#)

- Ultrasonic stamping is available for fabrics having mesh openings < 400 µm. It ensures tight tolerances and provides high-quality sealed edges which do not fray
- Stamped discs with a diameter range of 6 to 95 mm are possible. Multilayer pieces are possible

Packaging / Labeling



- Stamped pieces are packed into sealed PE bags
- Stamped pieces made of SEFAR MEDIFAB fabrics are double bagged
- The label contains the following standard information:
manufacturer, material, outer dimensions,
manufacturing date, order number, batch number
- If it is packed according to medical standards (double-layer packaging), the label is attached to the inner bag

Your Benefits

Sefar AG

Hinterbissaustrasse 12
9410 Heiden
Switzerland

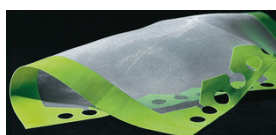
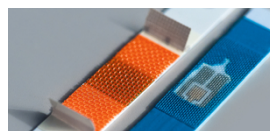
Phone +41 71 898 5700
Fax +41 71 898 5721

info@sefar.com

[Go to product page](#)

- Almost unlimited range of shapes (various technologies)
- Suited for healthcare applications (SEFAR MEDIFAB, double bag)
- Traceability (label)
- Non-fraying edges (depending on selected technology)

For industry/application specific use please see links below:



For further information and fabric samples, please select the preferred contact option on the right.

Locations



Sefar AG

Töberstrasse 4
9425 Thal – Switzerland
Phone: +41 71 898 5700
Fax: +41 71 886 3504

■ E-Mail

Sefar AG

Hinterbissastrasse 12
9410 Heiden
Switzerland

Phone +41 71 898 5700
Fax +41 71 898 5721

info@sefar.com

[Go to product page](#)



Sefar AG

Hinterbissastrasse 12
9410 Heiden
Switzerland
Phone: +41 71 898 5700
Fax: +41 71 898 5721

■ **E-Mail**

Sefar AG

Hinterbissastrasse 12
9410 Heiden
Switzerland

Phone +41 71 898 5700
Fax +41 71 898 5721

info@sefar.com

[Go to product page](#)