

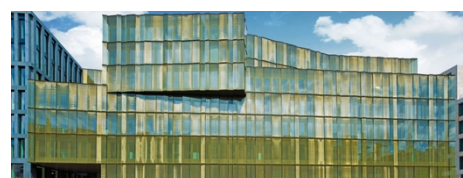
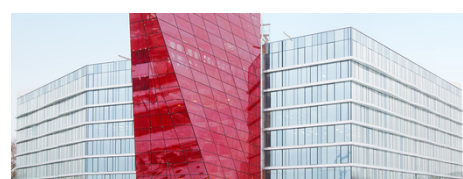
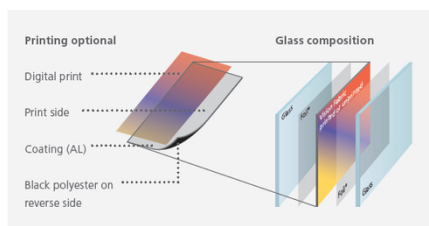
# SEFAR Architecture fabric&glass

SEFAR Architecture VISION | fabric & glass is a range of high precision fabrics, made from synthetic black monofilament yarn, metal coated, at least on one side coated and optionally printed.

## Product Information

### Application

SEFAR Architecture VISION fabric is part of a glass laminate, covered in-between two panes of glass and two interlayer foils, fully embedded and protected towards environmental influences. Applicable for flat, as well as for curved glass. SEFAR Architecture VISION fabric is part of a glass laminate.



## DOWNLOADS

For exterior and interior applications such as:

- Façades
- Glass canopies
- Glass skylights
- Glass fins
- Glass louvers
- Balustrades
- Privacy sections
- Wall panels and gladdings
- Glass partition walls

### Sefar AG

Hinterbissaustrasse 12  
9410 Heiden  
Switzerland

Phone +41 71 898 5700  
Fax +41 71 898 5721

[info@sefar.com](mailto:info@sefar.com)

[Go to product page](#)

## Benefits

Besides the outstanding, lively 3-D appearance of the fabric and it's unique one-way-vision effect, SEFAR Architecture VISION provides a number of clear additional benefits for architects, designers, engineers, owners and users of buildings with glass applications.

The fabric's open area determines the degree of energy transmission and transparency. In addition, the metal coating and color is also instrumental for the reduction of energy transmission.

- Reduction of SHGC / g-value
- Privacy
- Providing shading
- Lively 3-D appearance
- Glare protection
- Design, creativity & function
- Bird strike protection
- One-way-vision effect
- Active safety due to laminated glass
- Patented product

### Sefar AG

Hinterbissastrasse 12  
9410 Heiden  
Switzerland

Phone +41 71 898 5700  
Fax +41 71 898 5721

[info@sefar.com](mailto:info@sefar.com)

[Go to product page](#)

## PROJECTS



### University, Sydney, AU

New teaching and learning facility and extensive refurbishment of the heritage RD Watt Building.

❖ **Press release:**  
**University,**  
**Sydney, AU**



### World Trade Center 3, NYC, US

Podium facade designed with Vision fabric AL 140/50.

❖ **Reference: World**  
**Trade Center 3**



### Midtown Jalisco, Guadalajara, MX

Mixed use commercial building with Copper printed Vision fabric in the facade.

❖ **Reference:**  
**Midtown Jalisco**



### World Trade Center 3, NYC, US

Elegant entrance atrium and elevator banks.

❖ **Reference: WTC,**  
**NYC**

#### Sefar AG

Hinterbissastrasse 12  
9410 Heiden  
Switzerland

Phone +41 71 898 5700  
Fax +41 71 898 5721

[info@sefar.com](mailto:info@sefar.com)

[Go to product page](#)



**Dollar Bay, London, UK**

Like a beacon in the waterfront area with one and both sides printed Vision fabric on the ground floor.

❏ **Reference: Dollar Bay**



**Dal Mainz, DE**

Glass fins with laminated Vision fabric.

❏ **Reference: Dal Mainz**



**2100 K Street, Washington, US**

172 glass fins for the headquarters of the International Finance Corporation.

❏ **Reference: 2100 K Street**



**School Building Horw, CH**

After the renovation of the school building, the rhythmic interaction of colored glasses creates a distinctive and unique appearance.

❏ **Reference: School Building**





### **Balustrades in Corporate Office, Richmond, AU**

Golden printed Vision fabric has been laminated into the glass of the balustrades.

❏ **Reference:**  
**Corporate Office**



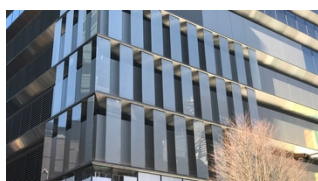
### **Skybridge, New York, US**

The SEFAR VISION fabric interlayer protects the skybridge from the heat and glare of the sun while providing unobstructed views of the city.

❏ **Reference:**  
**Skybridge**

❏ **Additional information**

❏ **More details...**



### **Ginza Six, Tokyo, JP**

This facade layout was chosen, as they wanted a design using glass which has a texture resembling a metal look.

❏ **Reference: Ginza Six, Tokyo**



### **Jackalope Hotel, Merricks North, AU**

In the hotel on the renowned Willow Creek Vineyard the SEFAR Architecture VISION fabric laminated glass makes for an impactful staircase and balustrade material.

❏ **Reference:**  
**Jackalope Hotel**

#### **Sefar AG**

Hinterbissaustrasse 12  
9410 Heiden  
Switzerland

Phone +41 71 898 5700  
Fax +41 71 898 5721

[info@sefar.com](mailto:info@sefar.com)

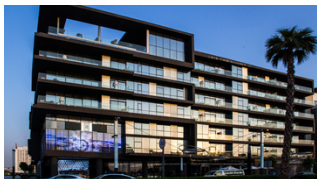
[Go to product page](#)



**Hyundai Motors R&D Center, Gyeonggi-do, KR**

The main reason to use the Vision fabric was privacy shield from exterior and to get a good view from inside.

▣ **Reference: Hyundai Center**



**City Walk, Dubai, UAE**

City Walk building in Dubai

▣ **Reference: City Walk**



**Nevada Labor Building, Reno, US**

The State of Nevada required a new cafeteria for its staff and created an open and pleasant space to reduce energy costs while providing ample daylight.

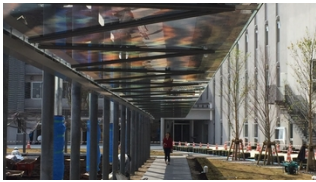
▣ **Reference: Nevada Labor Building**



**International Finance Center, Jersey, UK**

Half of the 3'300 m<sup>2</sup> facade of the world-class business hub, providing environmentally sustainable Grade A office and retail space, is equipped with floor-to-ceiling windows laminated with VISION AL 260/50B fabric.

▣ **Reference: Jersey Finance Center**



**Nerima School, Tokyo, JP**

The covered corridor protects students from rain and sun.

■ **Reference:**  
**Nerima School**



**Goldin Financial Global Center, Kowloon Bay, HK**

The intent was privacy and to light from the edge of IGU, using the fabric to scatter the light to achieve a glowing effect on the surface of glass.

■ **Reference: Goldin Financial Global Center**



**UBS Broadgate Elevators, London, UK**

Vision fabric laminated used for wall claddings

■ **Reference: UBS Broadgate Elevators**



**University of Hertfordshire, Hatfield, UK**

Science building with Insulated Double Glazed units laminated with Sefar Vision fabrics.

■ **Reference: University of Hertfordshire**

**Sefar AG**

Hinterbissastrasse 12  
9410 Heiden  
Switzerland

Phone +41 71 898 5700  
Fax +41 71 898 5721

[info@sefar.com](mailto:info@sefar.com)

[Go to product page](#)



### **Library Birmingham, UK**

Contemporary aesthetic  
with high level of glazing

❏ **Reference:**  
**Library  
Birmingham**



### **Australian Post Office, Westin Melbourne, AU**

The glass building of the

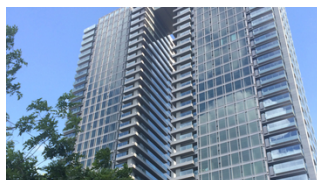
❏ **Reference:**  
**Australian Post  
Office**



### **Novartis Research Facility, Cambridge, US**

Glass Louvers laminated  
with both sides coated/  
printed Vision fabric for  
improvements.

❏ **Reference:**  
**Novartis  
Research Facility**



### **Da Heng Building, Taichung, TW**

The project specific  
SEFAR Architecture  
VISION PR 260/50  
metallic grey fabric was  
laminated in the lower  
curtain wall for a total of  
over 1000 sqm.

❏ **Reference: Da  
Heng Building**

#### **Sefar AG**

Hinterbissastrasse 12  
9410 Heiden  
Switzerland

Phone +41 71 898 5700  
Fax +41 71 898 5721

[info@sefar.com](mailto:info@sefar.com)

[Go to product page](#)



**Dun Laoghaire Library,  
Dublin, IR**

The windows of the Dun Laoghaire library are more conventional openings, partly shaded with louvres, which are laminated with SEFAR Architecture

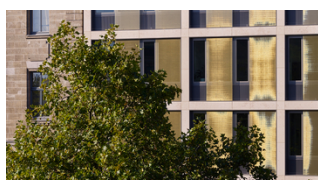
❏ **Reference: Dun  
Laoghaire Library**



**Airport Keflavik, IS**

The building consists of a glass facade, featuring SEFAR Architecture VISION. This fabric is laminated into the exterior glass facade, acting as a sunscreen and having a

❏ **Reference:  
Airport Keflavik**



**Georgstrasse, Hannover,  
DE**

The aspect of the sunscreens across the entire facade was as important as the change of image in an innovative way.

❏ **Reference:  
Georgstrasse**



**Construction company  
van Roey, Het Looi  
Rijkevorsel, BE**

The innovative system is not only functionally efficient but also offers design freedom through numerous color and shaping options. Vertical and horizontal glass fins with laminated SEFAR Architecture VISION Fabric were installed across four levels of the building's facade.

❏ **Reference: Het  
Looi**

**Sefar AG**

Hinterbissastrasse 12  
9410 Heiden  
Switzerland

Phone +41 71 898 5700  
Fax +41 71 898 5721

[info@sefar.com](mailto:info@sefar.com)

[Go to product page](#)



**Animal Protection  
Office, Zurich, CH**

The glass facade with 1'400 m<sup>2</sup> of laminated SEFAR Architecture VISION Fabric provides an ideal habitat for animals and humans alike.

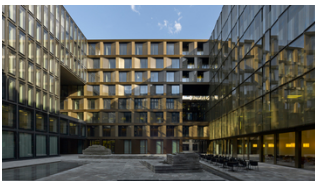
■ **Reference: Zurich  
Animal Protection  
Office**



**Swiss Railway Main  
Office Building, Bern  
Wankdorf, CH**

The facades consist of colored, moveable glass slats which transform the visual appearance of the building as the sun moves across the sky.

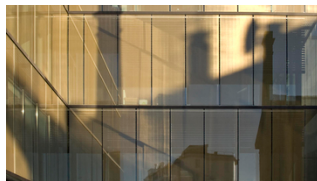
**Reference: Swiss  
Railway Main Office  
Building**



**Europaallee 21,  
Construction Area C,  
Zurich, CH**

The building complex is formed from four structures grouped together around an open courtyard in the shape of a windmill sail. Each building was designed by a different architect so is therefore different in appearance.

**Reference:  
Europaallee,  
Construction Area**



**C Quadro, Executive  
Building, Udine, IT**

The ultra-modern, elegant 'C Quadro Executive Building' lends a new sparkle and gives a new face to the district where it's located. The facade laminated with the SEFAR VISION fabric subtly picks up on the set piece – the familiar silhouette – and deliberately mirrors the characteristically irregular city skyline.

**Reference: C  
Quadro, Executive  
Building**

**Sefar AG**

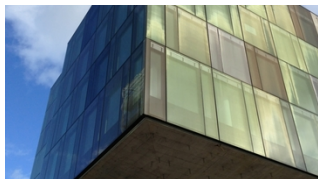
Hinterbissastrasse 12  
9410 Heiden  
Switzerland

Phone +41 71 898 5700  
Fax +41 71 898 5721

[info@sefar.com](mailto:info@sefar.com)

[Go to product page](#)





**Suurstoffi Offices,  
Rotkreuz, CH**

Novartis Corporation's new Swiss Headquarters at 'Suurstoffi' Rotkreuz is fitted with different colored SEFAR Architecture VISION fabric.

**Reference:  
Suurstoffi Offices**



**Würth Building,  
Rorschach, CH**

Five-storey administration building directly at the lakeside.

**Reference: Würth  
Building**



**10 Brock St, NEQ,  
Regent's Place, London,  
UK**

SEFAR Architecture VISION fabric is used to contrast with the profiled, anodized stainless steel behind glass on the south facade, while the east/ west façades are shaded with vertical fins of glass and translucent coated Sefar fabric. These fins vary in depth to create a wave pattern across the façade.

**Reference: Regent's  
Place, London**



**Crystal of sylvinite for  
BKK headquarters,  
Minsk, BY**

The general ideology of the office building was to employ maximum color, light and glass. The intention of the 8 floor building was to symbolize a crystal of sylvinite.

**Reference: Crystal  
of sylvinite for BKK**

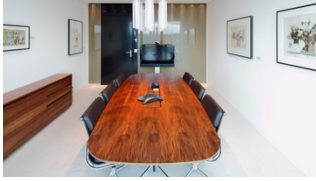
#### **Sefar AG**

Hinterbissaustrasse 12  
9410 Heiden  
Switzerland

Phone +41 71 898 5700  
Fax +41 71 898 5721

[info@sefar.com](mailto:info@sefar.com)

[Go to product page](#)



**Prime Tower Room divider, Zurich, CH**

Double side coated SEFAR Architecture VISION fabric as room divider between the meeting room and corridor of a bank.

**Reference: Prime Tower Room divider**



**Prime Tower Ceiling, Zurich, CH**

The SEFAR Architecture VISION fabric attached to metal ceiling panels build a cloudy ceiling in the restaurant Clouds.

**Reference: Prime Tower Ceiling**



**Fashion House, Madrid, ES**

The glass curtain wall is reminiscent of a three-dimensional checkerboard. This is achieved using alternating panels of clear laminated safety glass and panels embedded with VISION fabric.

**Reference: Fashion House Madrid**



**Haus der Stadtgeschichte, Heilbronn, DE**

The renovated 'Haus der Stadtgeschichte' is now part of the Heilbronn City Archive. In the original building, the interior areas were uncomfortably warm so much consideration was given to providing sun protection when planning the renovation.

**Reference: City Archive, Heilbronn**

**Sefar AG**

Hinterbissastrasse 12  
9410 Heiden  
Switzerland

Phone +41 71 898 5700  
Fax +41 71 898 5721

[info@sefar.com](mailto:info@sefar.com)

[Go to product page](#)





## Design Festival, London,

The installation 'Two Lines' by David Chipperfield Architects with SEFAR Architecture VISION fabric simultaneously delighted and intrigued visitors to Size+Matter.

**Reference: London Design Festival**

### Sefar AG

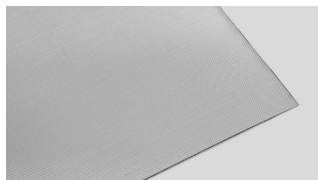
Hinterbissaustrasse 12  
9410 Heiden  
Switzerland

Phone +41 71 898 5700  
Fax +41 71 898 5721

[info@sefar.com](mailto:info@sefar.com)

[Go to product page](#)

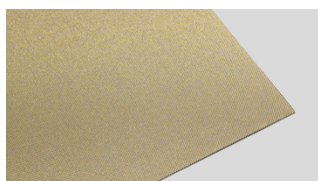
## FABRIC ASSORTMENT AND STANDARD COLORS



**AL 140/25**



**PR 140/25 Copper CPST**



**PR 140/25 Gold GDST**



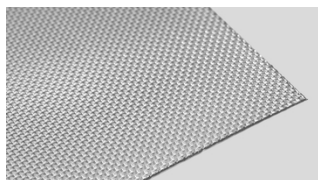
**AL 140/25 Glass**



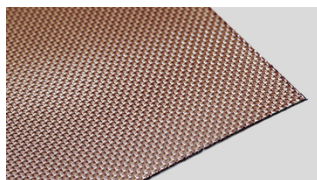
**PR 140/25 Copper, Glass**



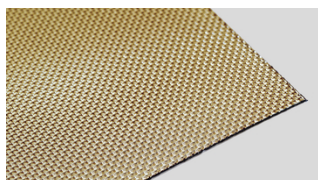
**PR 140/25 Gold, Glass**



**AL 140/50**



**PR 140/50 Copper CPST**



**PR 140/50 Gold GDST**



**AL 140/50 Glass**

### Sefar AG

Hinterbissaustrasse 12  
9410 Heiden  
Switzerland

Phone +41 71 898 5700  
Fax +41 71 898 5721

[info@sefar.com](mailto:info@sefar.com)

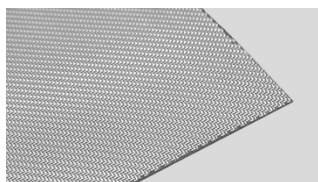
[Go to product page](#)



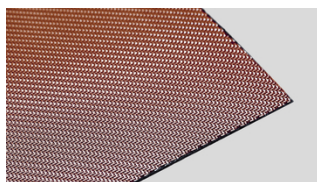
**PR 140/50 Copper, Glass**



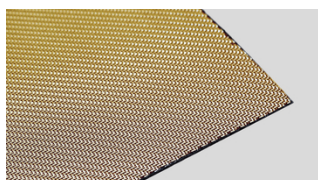
**PR 140/50 Gold, Glass**



**AL 260/30**



**PR 260/30 Copper CPST**



**PR 260/30 Gold GDST**



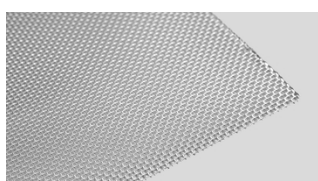
**AL 260/30 Glass**



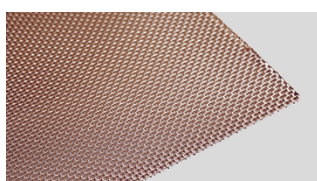
**PR 260/30 Copper, Glass**



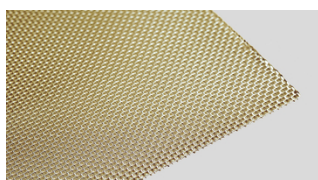
**PR 260/30 Gold, Glass**



**AL 260/55**



**PR 260/55 Copper CPST**



**PR 260/55 Gold GDST**



**AL 260/55 Glass**

**Sefar AG**

Hinterbissaustrasse 12  
9410 Heiden  
Switzerland

Phone +41 71 898 5700  
Fax +41 71 898 5721

[info@sefar.com](mailto:info@sefar.com)

[Go to product page](#)



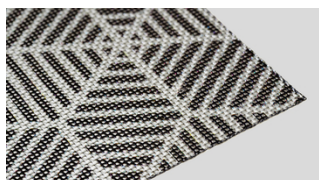
**PR 260/55 Copper, Glass**



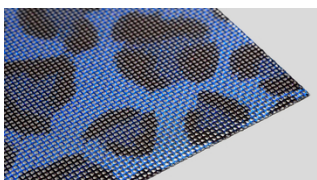
**PR 260/55 Gold, Glass**

## COLOR DESIGN OPTIONS

### Pattern examples / Customized patterns



**PR 260/55 black & silver pattern**



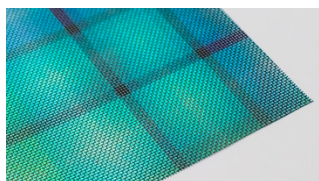
**PR 260/55 Leopard blue pattern**



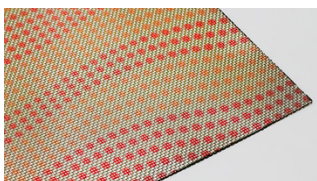
**PR 260/55 red pattern**



**PR 260/55 Tiger red pattern**



**PR 260/55 turquoise square pattern**



**PR 260/55 red dots pattern**

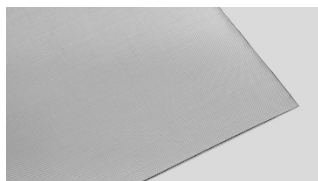
#### **Sefar AG**

Hinterbissaustrasse 12  
9410 Heiden  
Switzerland

Phone +41 71 898 5700  
Fax +41 71 898 5721

[info@sefar.com](mailto:info@sefar.com)

[Go to product page](#)



**Silver**



**Copper CPST**



**Gold GDST**

**Color samples or customer specific colors**



By means of digital printing, the coated fabric sides can be decorated with individual designs or any specific color. In addition to the one-side coating and printing, both sides can be coated and printed (e.g. for glass-fins or -louver, glass partition walls), even with different colors or designs, without any show-through on the reverse side.

**SEFAR VISION – A fusion of unique aesthetics and function**

**Sefar AG**

Hinterbissaustrasse 12  
9410 Heiden  
Switzerland

Phone +41 71 898 5700  
Fax +41 71 898 5721

[info@sefar.com](mailto:info@sefar.com)

[Go to product page](#)



## One-way-vision effect

The so-called one-way-vision effect is obviously the main aspect of the product. It provides an exceptional range of design possibilities on the outer face of the glass pane for architects and façade designers, on the basis of a unique, exciting and lively 3-D appearance – without disturbing the view from the inside to the outside. Find it out by sliding the pictures:.



Outside view –  
Project BKK,  
Minsk (Belarus)



View from  
inside – BKK  
Building, Minsk



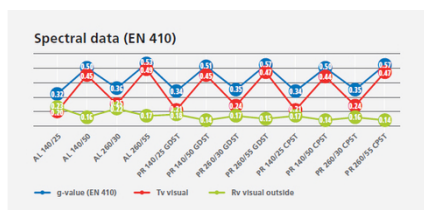
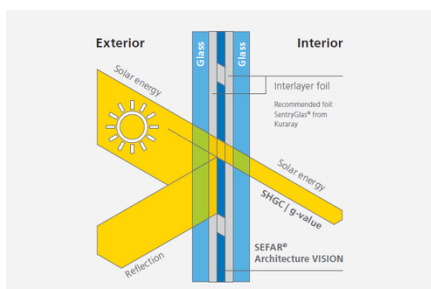
Example for  
visual  
appearance from  
outside



View from inside

## Energy transmission in laminated glass in combination with SEFAR VISION fabric

The fabric's open area determines the degree of energy transmission and transparency. In addition, the metal coating and color is also instrumental for the reduction of energy transmission.



## SEFAR Architecture – Brochures & Documents

### Sefar AG

Hinterbissastrasse 12  
9410 Heiden  
Switzerland

Phone +41 71 898 5700  
Fax +41 71 898 5721

[info@sefar.com](mailto:info@sefar.com)

[Go to product page](#)

- [Table of values \(, 0 kb\)](#)
- [Bird protection \(, 0 kb\)](#)
- [Our vision](#)

## CONTACT

Please call us for  
further information:  
Phone CH: +41 71  
898 5700

■ [Send mail](#)

## Locations



### Sefar AG

Töberstrasse 4  
9425 Thal – Switzerland  
Phone: +41 71 898 5700  
Fax: +41 71 886 3504

■ [E-Mail](#)

### Sefar AG

Hinterbissastrasse 12  
9410 Heiden  
Switzerland

Phone +41 71 898 5700  
Fax +41 71 898 5721

[info@sefar.com](mailto:info@sefar.com)

[Go to product page](#)



**Sefar AG**

Hinterbissastrasse 12  
9410 Heiden  
Switzerland  
Phone: +41 71 898 5700  
Fax: +41 71 898 5721

■ **E-Mail**

**Sefar AG**

Hinterbissastrasse 12  
9410 Heiden  
Switzerland

Phone +41 71 898 5700  
Fax +41 71 898 5721

[info@sefar.com](mailto:info@sefar.com)

[Go to product page](#)