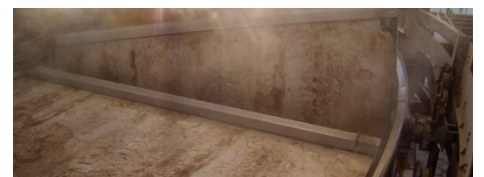


# Rotary Pan Filters

Sefar filter covers are suitable for all types of pan filter applications, including tilting pan or screw type filters. Our fabric solutions are adapted to all process conditions, including temperature and chemical resistance.



## Product Features

### Sefar filter solutions for Rotary Pan Filters

Sefar filter covers are suitable for all common types of rotary pan filters such as tilting pan or screw discharge systems. A wide range of dedicated filter media covers the need of the most common separation tasks performed on rotary pan filters. Sefar filter covers are the material of choice for rotary pan filters. They are suitable for all common types of rotary pan filters such as tilting pan or screw discharge systems. A wide range of dedicated filter media covers the need of the most common separation tasks performed on rotary pan filters and are known to last longer and yield higher results than ordinary filter cloths.

## DOWNLOADS

Brochure: Process Filtration (PDF 5300 kb)

## Fabrication solutions

Sefar covers for pan filters are developed for outstanding performance and service life time.

They are available in fabrics of different weave styles, wire diameters and widths. Precise laser-cut technology allows fabrication under highest quality standards.

### Laser-cutting machine

### Perfect fitting during installation



## Sefar AG

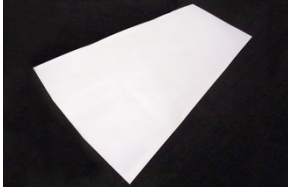
Hinterbissastrasse 12  
 9410 Heiden  
 Switzerland

Phone +41 71 898 5700  
 Fax +41 71 898 5721

[info@sefar.com](mailto:info@sefar.com)

[Go to product page](#)

**Segment cover**

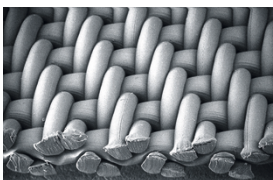


**Filter media technology**

The SEFAR **TETEX** line comprises a complete range of monofilament, multifilament and mixed mono-/multifilament fabrics.

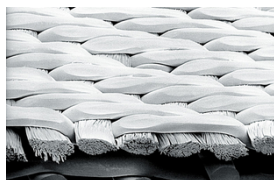
SEFAR **TETEX** fabrics all have uniformly distributed pores and a smooth surface as a result of special fabric finishing. Monofilament fabrics deliver outstanding filtration results. They do not clog during filtration and can be cleaned easily. Multifilament fabrics are used especially for their ability to retain very fine particles as well as their mechanical resistance. The mixed monofilament and multifilament mesh combine several of their most useful properties.

**Monofilament fabric**



- For maximum permeability and optimal cleaning

**Double-layer fabric**



- With filter layer and sturdy supporting fabric

**Sefar AG**

Hinterbissastrasse 12  
 9410 Heiden  
 Switzerland

Phone +41 71 898 5700  
 Fax +41 71 898 5721

[info@sefar.com](mailto:info@sefar.com)

[Go to product page](#)

■ properties

■ Fine and smooth

filtration surface



## CONTACT

- Local contact
- Contact form
- Send mail

Please call us for further information:  
Phone CH: +41 71 898 5700

## Locations



### Sefar AG

Töberstrasse 4  
9425 Thal – Switzerland  
Phone: +41 71 898 5700  
Fax: +41 71 886 3504

■ E-Mail

### Sefar AG

Hinterbissastrasse 12  
9410 Heiden  
Switzerland

Phone +41 71 898 5700  
Fax +41 71 898 5721

[info@sefar.com](mailto:info@sefar.com)

[Go to product page](#)



**Sefar AG**

Hinterbissastrasse 12  
9410 Heiden  
Switzerland  
Phone: +41 71 898 5700  
Fax: +41 71 898 5721

■ **E-Mail**

**Sefar AG**

Hinterbissastrasse 12  
9410 Heiden  
Switzerland

Phone +41 71 898 5700  
Fax +41 71 898 5721

[info@sefar.com](mailto:info@sefar.com)

[Go to product page](#)