

Sefar AG

Hinterbissastrasse 12
9410 Heiden
Switzerland

Phone +41 71 898 51 04
info@sefararchitecture.com
www.sefararchitecture.com

f a b r i c & g l a s s

City Walk Jumeirah Dubai (AE)

[FactBox]

Fabric

SEFAR® Architecture VISION AL 260/25

Size/Quantity

4'000 m² (approx. 43'055 Sqft.)

Project/Location

City Walk Jumeirah, Dubai (AE)

Building type

Commercial Building

Architect

Benoy, Dubai (AE)

Glass manufacturer

Future Architectural Glass LLC

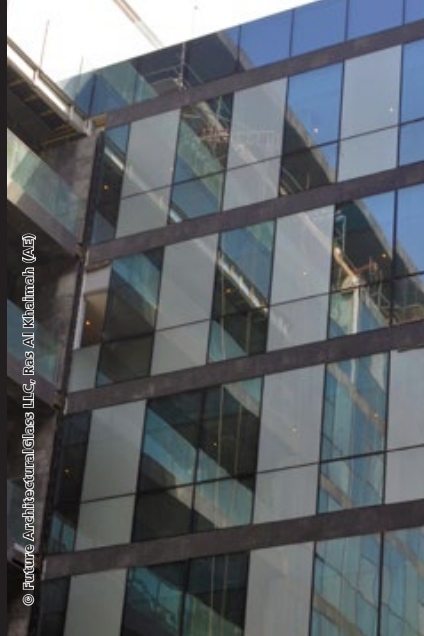
Ras Al Khaimah (AE)

Foil

SentryGlas® supplied by Kuraray/DuPont

Facade builder

Al Abbar Aluminium, Dubai (AE)



[ProjectInfo]

The City Walk building in Dubai is a mixed location with retail and dining center combined with high end residences. Located in one of the prime locations in UAE, City Walk is a portion of a trend of mega developments in the region.

The laminated exterior lites use SEFAR® Architecture VISION AL 260/25 mesh to add depth exterior curtain wall appearance while reducing glare and solar heat gain for the condominium owners. The VISION material is a black polyester fabric, coated with aluminum metal facing the outside while inside remains black to allow for clear views to the outside. Different day-and sunlight gives the facade a wonderful color changing enhancement.

The glass sizes are approx. 2.5 x 1.5 m, fixed in an Aluminum metal frame and part of an insulating glass unit (IGU).

ARCHITECTURE

S E F A R
■ ■ ■ ■