

Sefar AG | Switzerland
Phone +41 71 898 51 04
info@sefararchitecture.com

Sefar Inc. | North America
Phone +1 727 388 4919
peter.katcha@sefar.com

www.sefararchitecture.com

f a b r i c & g l a s s

Skybridge at NYC's American Copper Buildings New York (US)

[FactBox]

Fabric

SEFAR® Architecture VISION AL 260/55

Size/Quantity

827 m² (8'901 Sqft.)

Project/Location

Skybridge, 626 1st Avenue, New York (US)

Construction type

Bridge

Architect

SHoP Architects, New York (US)

Developer

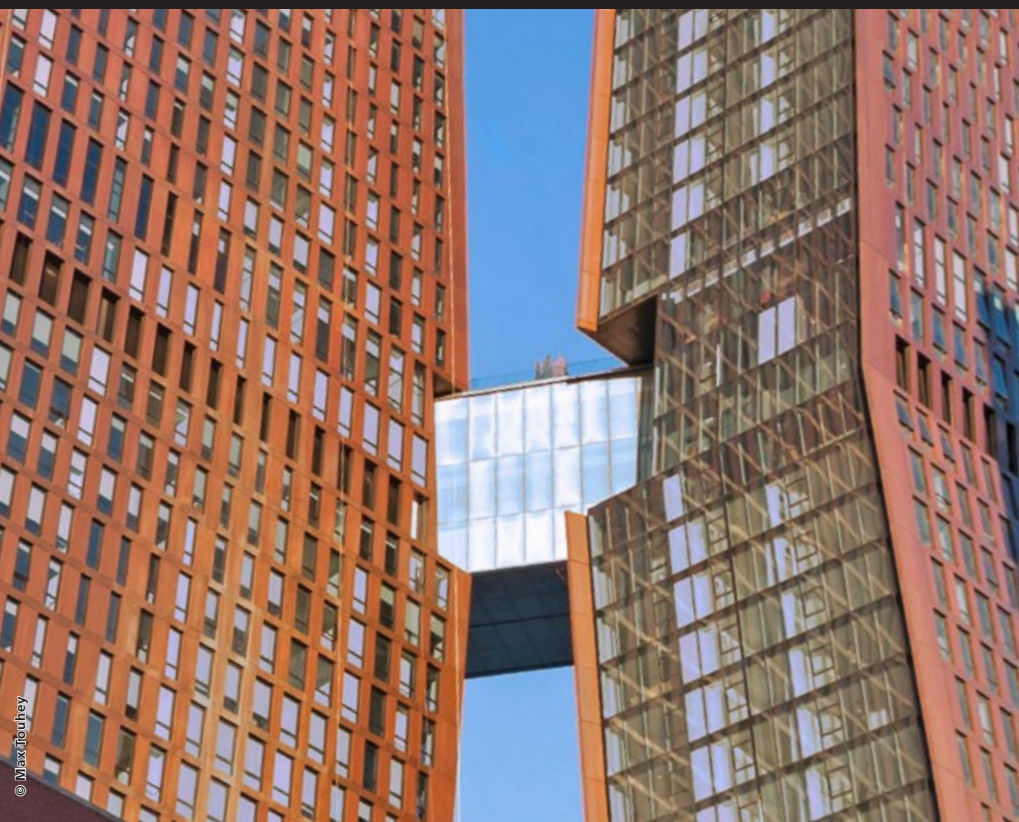
JDS Development Group, New York (US)

Glass manufacturer

McGrory Glass, Paulsboro NJ (US)

Foil

SentryGlas® supplied by Kuraray/DuPont



[ProjectInfo]

The skybridge connects the building's two towers, which house 760 residences. SEFAR® Architecture VISION fabric interlayer protects the skybridge and its 60'000 square feet of amenities from the heat and glare of the sun while providing unobstructed views of the city. Barely perceptible from the black inside, Vision fabric interlayer utilizes the three-dimensional effects of the fabric to provide a unique depth to the glass façade. From the Aluminium coated outside, the fabric is opaque, offering privacy for building occupants. The Skybridge is a multi-use, triple-level facility, including a 75-foot long indoor lap pool. Functionally, the Vision fabric interlayers improve thermal performance by reducing heat loading. The laminated fabric will also reduce glare by mitigating visual light transmission (VLT), eliminating the need for further shading systems.

ARCHITECTURE

S E F A R
■ ■ ■ ■