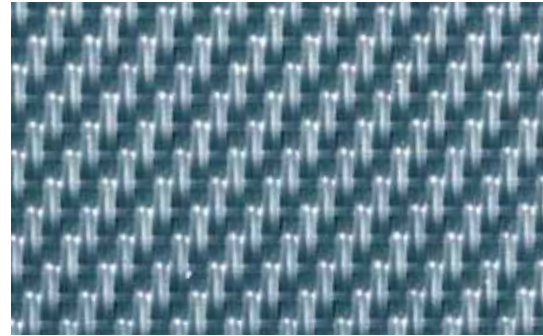
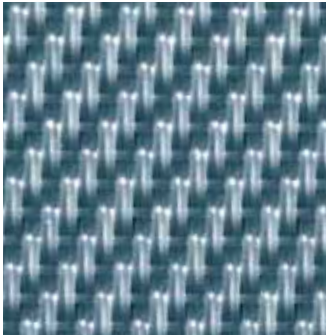
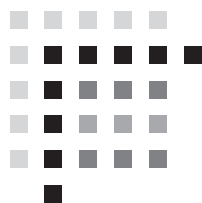


SEFAR® PHARMA Grade



Mono-/Multifilament, Double layer and
Open mesh fabrics for Pharma applications



S E F A R

Trademark	Product reference Bezeichnung	Air permeability [l/m ² /s] Luftdurchlass	Mesh opening / Pore size [µm] Maschenweite / Porengrösse	Open area [%] Offene Fläche	Weight [g/m ²] Gewicht	Thickness [µm] Dicke	Widths on stock [cm] Breiten an Lager	Widths on request [cm] Breiten auf Anfrage
Double layer fabrics								
SEFAR TETEX® DLW	05-8000-SK 007 PHARMA	30	7		420	760		155
SEFAR TETEX® DLW	05-8000-SK 008 PHARMA	40	8		420	760		155
SEFAR TETEX® DLW	05-8000-SK 012 PHARMA	50	12		455	850	155	
SEFAR TETEX® DLW	05-8000-K 020 PHARMA	100	20		425	860	155	
SEFAR TETEX® DLW	05-8000-SK 030 PHARMA	200	30		440	860		155
SEFAR TETEX® DLW	05-8000-K 050 PHARMA	400	50		440	920		155
SEFAR TETEX® DLW	05-8000-K 085 PHARMA	600	85		440	950		155
SEFAR TETEX® DLW	05-8000-W 120 PHARMA	1700	120		425	1280	155	
SEFAR TETEX® DLW	17-8000-SK 020 PHARMA	100	20		586	1013		160
SEFAR TETEX® DLW	17-8000-K 040 PHARMA	300	40		586	1240		160
Filter fabrics monofilament								
SEFAR TETEX® MONO	05-1100-SK 014 PHARMA	100	14		136	200		146
SEFAR TETEX® MONO	05-1050-SK 025 PHARMA	95	25		210	320		150
SEFAR TETEX® MONO	05-1550-SK 030 PHARMA	90	30		290	390		145
SEFAR TETEX® MONO	05-1050-K 036 PHARMA	190	36		235	380		151
SEFAR TETEX® MONO	05-1550-K 053 PHARMA	170	53		300	430		146
SEFAR TETEX® MONO	05-1001-W 120 PHARMA	1850	120		265	725		233
SEFAR TETEX® MONO	07-1500-SK 011 PHARMA	25	11		240	265		224
SEFAR TETEX® MONO	17-2005-SK 012 PHARMA	150	12		103	107	158	
SEFAR TETEX® MONO	24-1100-SK 012 PHARMA	7	12		340	200		230
SEFAR TETEX® MONO	24-1100-K 020 PHARMA	17	20		340	210		230
Filter fabrics multifilament								
SEFAR TETEX® MULTI	03-110-168 WA PHARMA	110			168	225		180
SEFAR TETEX® MULTI	V-05-4-660 K PHARMA	4			660	1060		150
SEFAR TETEX® MULTI	05-11-360 SK PHARMA	11			360	580		136
SEFAR TETEX® MULTI	V-05-16-600 K PHARMA	16			600	880		170
SEFAR TETEX® MULTI	05-22-300 W PHARMA	22			300	565		199
SEFAR TETEX® MULTI	V-05-40-505 W PHARMA	40			505	990		150
SEFAR TETEX® MULTI	V-05-70-455 W PHARMA	70			455	940		130
SEFAR TETEX® MULTI	07-11-570 SK PHARMA	11			570	610		159
SEFAR TETEX® MULTI	07-65-180 WA PHARMA	65			180	265	153	
SEFAR TETEX® MULTI	V-07-100-150 WA PHARMA	100			170	230		190
SEFAR TETEX® MULTI	V-07-170-360 W PHARMA	170			360	500		195
SEFAR TETEX® MULTI	V-07-200-150 WA PHARMA	200			160	230		190
SEFAR TETEX® MULTI	V-07-300-150 WA PHARMA	300			150	230		190
Open mesh fabrics								
SEFAR® PROPYLEX	05-1680/46 PHARMA		1680	46	410	1600		139
SEFAR NITEX®	06-1700/50 PHARMA		1700	50	385	1300		158
SEFAR PETEX®	07-1680/50 PHARMA		1680	50	465	1300		158
SEFAR® PEEKTEX	17-1000/45 PHARMA		1000	45	370	930		315

All technical data are to be considered as guidelines only.

03 = PA 6.6 05 = PP 06 = PA6 07 = PET 17 = PEEK 24 = PTFE

Sefar Headquarter
Sefar AG
 Filtration Division
 P.O. Box
 CH-9410 Heiden, Switzerland
 Phone +41 71 898 57 00
 Fax +41 71 898 57 21
 E-mail filtration@sefar.com

Sefar Filtration Inc.
 Buffalo
 111 Calumet Street
 Depew, New York 14043, USA
 Toll Free +1 877 481 3626
 Phone +1 716 683 4050
 Fax +1 716 683 4053
 E-mail filtration@sefar.us

Sefar Singapore Pte. Ltd.
 371 Beach Road KeyPoint
 #21-01/02/03
 Singapore 199597
 Phone +65 6 299 9092
 Fax +65 6 299 6359
 E-mail info-sg@sefar.com
www.sefar.com